



RIM Repackaging for Shipment

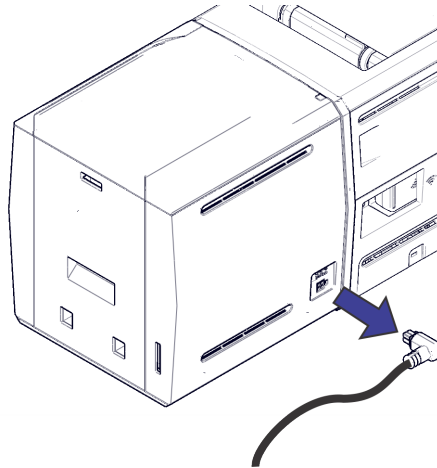
Use the following procedures to prepare the Entrust Rear Indent Module (RIM) for shipment.

1. Press the power button to power off the printer.

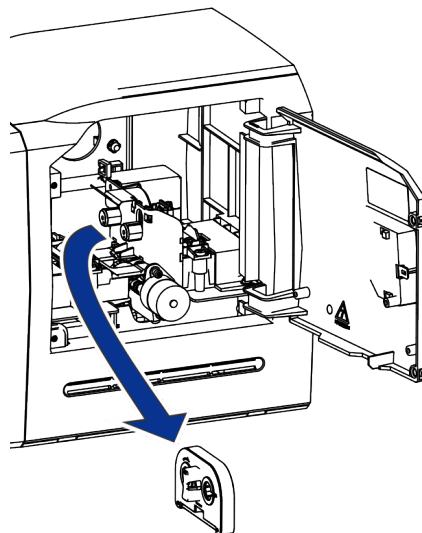


Caution: Wait until all the lights on the front panel are off to make sure that the printer power is off.

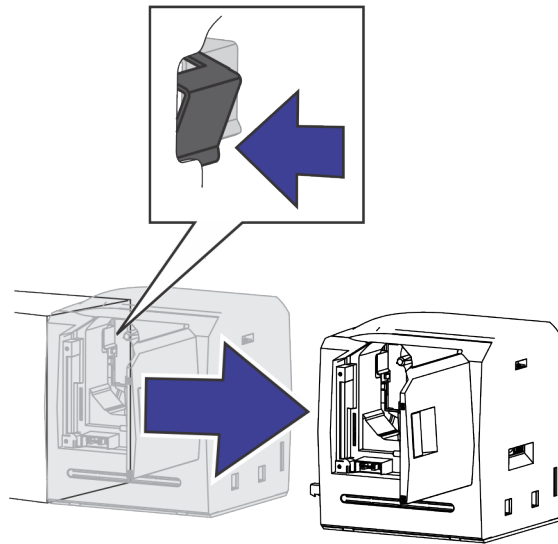
2. Unplug the power cord from the RIM (the cord is not required for shipment).



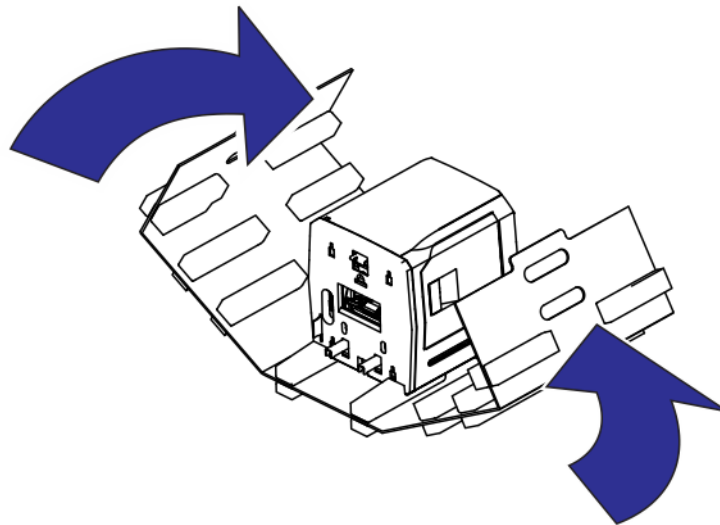
3. Remove the RIM supplies.
 - a. Unlock and open the RIM access door.
 - b. Remove the indent ribbon cassette (the cassette is not required for shipment).



4. Remove the RIM from the printer.
 - a. Reach inside the RIM impresser towards upper front section and push in on the release latch.
 - b. Pull out the RIM from the printer.
 - c. Close and lock the RIM access door.



5. Pack the RIM.
 - a. Place the RIM on the folding container and close the sides of the container.



- b. Place the end caps into the folding container.
- c. Lift the folding container using the handle cut outs and place the container in the box.
- d. Place the accessories tray in the box.
- e. Close and secure the box with shipping tape.

